

2014

# Springfield by the Numbers

A numerical profile of the Greater Springfield Illinois Region



The Greater Springfield Chamber of Commerce

Q5 Quantum Growth Partnership

5/1/2014

# Table of Contents

Pg.

---

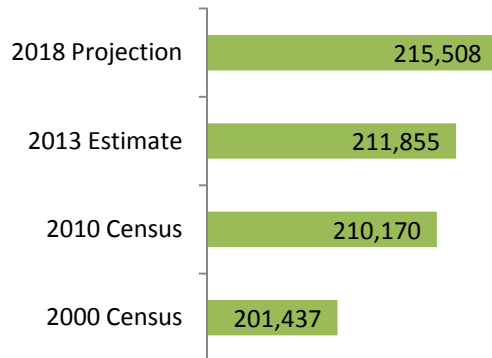
<b>Demographics</b> .....	1
<b>Education</b> .....	2-3
<b>Workforce</b> .....	4-5
<b>Business Community</b> .....	6-7
<b>Cost of Business &amp; Taxes</b> .....	8-10



# Springfield Demographics



## Population Growth



Source: ESRI Community Analyst, 2013

## Employment (2013)

Total Employed	100,788
White Collar Occupations	67.2%
Blue Collar Occupations	14.5%
Services	18.3%

Source: ESRI Community Analyst, 2013

## Household Income (2012)

	Springfield Metro	United States
Median Household Income	\$55,621	\$51,371
Less than \$10,000	6.7%	7.7%
\$10,000 to \$14,999	5.6%	5.6%
\$15,000 to \$24,999	9.2%	11.1%
\$25,000 to \$34,999	10.5%	10.4%
\$35,000 to \$49,999	13.4%	13.8%
\$50,000 to \$74,999	19.6%	18.0%
\$75,000 to \$99,999	13.4%	11.9%
\$100,000 to \$149,999	13.5%	12.4%
\$150,000 to \$199,999	5.0%	4.6%
\$200,000 or more	3.1%	4.6%

Source: US Census Bureau, ACS, 2012

## Gender (2012)

Male	48.40%
Female	51.60%

Source: US Census Bureau, ACS, 2012

## Highest Educational Attainment (2012)

	Springfield	United States
Less than 9 <sup>th</sup> grade	2.3%	5.8%
9 <sup>th</sup> -12 <sup>th</sup> , No Diploma	5.9%	7.9%
High School Graduate	29.1%	28.0%
Some college, No Degree	21.5%	21.3%
Associate's Degree	8.0%	8.0%
Bachelor's Degree	21.4%	18.2%
Graduate or Professional Degree	11.7%	10.9%
Percent of High School Graduates	91.8%	86.4%
Percent Bachelor's Degree or Higher	33.1%	29.1%

Source: US Census Bureau, ACS, 2012

## Age Breakdown (2012)

<b>Median Age:</b>	<b>39.9</b>
Under 17	25.3%
18-34	19.1%
35-54	27.2%
55-74	21.7%
75 & Older	6.7%

Source: US Census Bureau, ACS, 2012

## Race/Ethnicity (2012)

One Race	97.90%
Two or More Races	2.10%
White	86.0%
Black or African American	12.70%
American Indian /Alaska Native	0.60%
Asian	2.20%
Native Hawaiian/Other Pacific	NA
Hispanic or Latino	1.90%
Some Other Race	0.80%

Source: US Census Bureau, ACS, 2012

The Greater Springfield Chamber of Commerce  
(217) 525-1173

Last Updated: 4/17/2014

Created & Designed By: Andrea Butler, Q5 Intern

E-mail: [pmarsh@gssc.org](mailto:pmarsh@gssc.org)

Website: [www.gssc.org](http://www.gssc.org)



# Springfield Education



## Regional Colleges & Universities

4-Year Institutions Enrollment	
Total	16,095
Full-Time	11,739
Part-Time	4,356
Under Graduate Full-Time	9,836
Graduate Full-Time	1,903

4-Year Institutions	Location	Enrollment
University of Illinois at Springfield	Springfield	6,234
Robert Morris University	Springfield	186
Benedictine University at Springfield	Springfield	792
Lincoln Christian University	Lincoln	1,232
Lincoln College	Lincoln	1,395
MacMurray College	Jacksonville	598
Illinois College	Jacksonville	980
Millikin University	Decatur	2,624
Blackburn College	Carlinville	591
Greenville College	Greenville	1,463

2-Year Associates & Certificate Colleges Enrollment	
Total	22,171
Full-Time	9,201
Part-Time	12,970

2-Year Associates & Certificate Enrollment	Location	Enrollment
Lincoln Land Community College	Springfield	14,177
Richland Community College	Decatur	7,994

Specialized Vocational/Technical Colleges Enrollment	
Total	1,040
Full-Time	495
Part-Time	645

Specialized Vocational/Technical Colleges Enrollment	
Midwest Technical Institute	835
ITT Technical Institute	78
St. John's College of Nursing	127

## Local Enrollments & Graduates (2012)

Lincoln Land Community College	Enrollment	Degrees
Ag, Ag Operations, Related Science	59	14
Computer & Information Science	129	24
Personal/Culinary	61	20
Education	60	1
Engineering	85	17
Family Consumer Science	39	2
Legal Professions	13	3
Liberal Arts/Sciences	3849	374
Multi/Interdisciplinary Studies	1522	214
Basic Skills	13	--
Personal Awareness	2	--
Homeland Security, Law Enforcement	119	125
Public Administration	1	--
Construction	36	6
Mechanic and Repair	234	127
Precision Production	23	12
Transportation and Materials	26	135
Visual/Performing Arts	41	3
Health Professions	636	632
Business Management/Marketing	245	52

University of Illinois at Springfield	Enrollment	Degrees
Undeclared	353	--
Natural Resources	94	30
Communication/Journalism	192	80
Computer & Information Science	643	220
Education	176	76
Legal Professions	107	29
English Language	158	28
Liberal Arts/Sciences	211	56
Biological/Biomedical	225	35
Math & Statistics	148	14
Multi/Interdisciplinary Studies	18	0
Philosophy/Religious	28	4
Physical Sciences	53	9
Psychology	373	104
Homeland Security/Law Enforcement	191	52
Public Administration	437	170
Social Sciences	182	49
Visual/Performing Arts	47	9
Health Professions	126	63
Business Management/Marketing	1139	252
History	147	46

St. John's College of Nursing	Enrollment	Degrees
Health Professions	119	49

Source: Illinois Board of Higher Education, 2012 (Fall Enrollment)

Source: The Integrated Postsecondary Education Data System

The Greater Springfield Chamber of Commerce  
(217) 525-1173

Last Updated: 4/17/2014

Created & Designed By: Andrea Butler, Q5 Intern

E-mail: [pmarsh@gssc.org](mailto:pmarsh@gssc.org)

Website: [www.gssc.org](http://www.gssc.org)



# Springfield Education

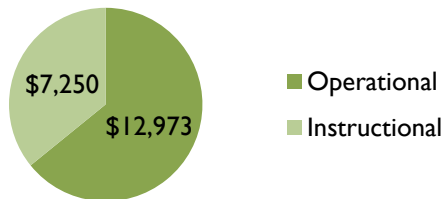


## Springfield, IL MSA-School Enrollment (2012)

Population 3+ years enrolled	53,642
Nursery School, Preschool	7.4%
Kindergarten	4.4%
Elementary (1-8)	43.4%
High School (9-12)	19.5%
College or Graduate	25.3%

Source: US Census Bureau, ACS, 2012

## Spending Per Student in District 186



Source: Illinois Report Card

## Student/Teacher Ratios

	Springfield	Chatham	Riverton	Rochester
<b>K-5</b>	6.68	6.26	7.51	9.03
<b>6-8</b>	2.72	4.70	5.40	2.77
<b>9-12</b>	3.56	4.68	5.05	4.90

Source: Illinois Report Card

## Highest Educational Attainment (2012)

	Springfield	United States
Less than 9 <sup>th</sup> grade	2.3%	5.8%
9 <sup>th</sup> -12 <sup>th</sup> , No Diploma	5.9%	7.9%
High School Graduate	29.1%	28.0%
Some college, No Degree	21.5%	21.3%
Associate's Degree	8.0%	8.0%
Bachelor's Degree	21.4%	18.2%
Graduate or Professional Degree	11.7%	10.9%
Percent of High School Graduates	91.8%	86.4%
Percent Bachelor's Degree or Higher	33.1%	29.1%

Source: US Census Bureau, ACS, 2012

## Enrollments & Graduates Cont. (2012)

Robert Morris University	Enrollment	Degrees
Information Technology	13	7
Computer Systems Networking	14	10
Culinary Arts/ Chef Training	0	0
Drafting and Design	4	10
Legal Assistant	14	12
Multi/Interdisciplinary Studies	17	9
Health and Physical Education	0	0
Commercial and Advertising Art	16	10
Interior Design	4	0
Graphic Design	17	17
Medical/Clinical Assistant	19	30
Pharmacy Technician/Assistant	0	0
Surgical Technology	0	0
Registered Nurse	0	0
Business Administration/Management	129	53
Accounting Technology	0	0
Management Information Systems	4	0

Source: Robert Morris University Information Department

The Greater Springfield Chamber of Commerce  
(217) 525-1173

Last Updated: 4/17/2014

Created & Designed By: Andrea Butler, Q5 Intern

E-mail: [pmarsh@gsc.org](mailto:pmarsh@gsc.org)

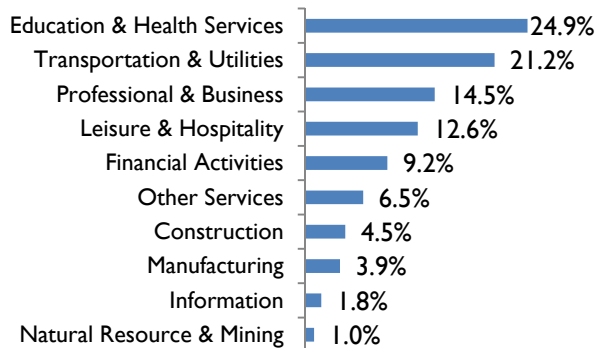
Website: [www.gsc.org](http://www.gsc.org)



# Springfield Workforce

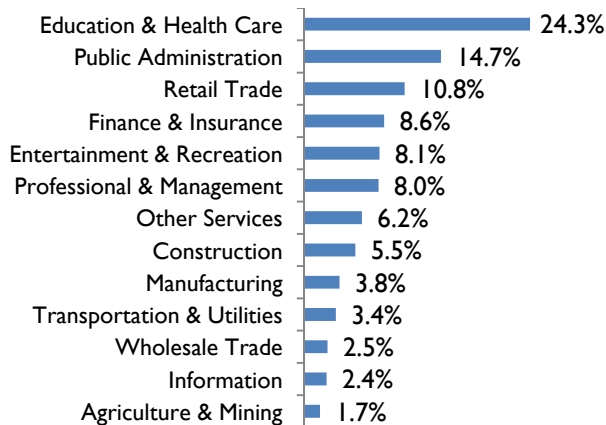


## Employment by Industry (2012)



Source: Bureau of Labor Statistics, QCEW

## Employment by Occupation (2012)



Source: US Census Bureau, ACS, 2012

## Springfield, IL MSA- Labor Force

Year	Labor Force	Unemployment
2003	137,958	5.4%
2005	132,350	4.7%
2010	128,823	8.1%
2012	129,757	7.5%

Source: Bureau of Labor Statistics, QCEW & LAUS

## Commuting Patterns

Average Commute Time 19.2 Minutes

Source: US Census Bureau, ACS, 2012

## Local Enrollments & Graduates (2012)

Lincoln Land Community College	Enrollment	Degrees
Ag, Ag Operations, Related Science	59	14
Computer & Information Science	129	24
Personal/Culinary	61	20
Education	60	1
Engineering	85	17
Family Consumer Science	39	2
Legal Professions	13	3
Liberal Arts/Sciences	3849	374
Multi/Interdisciplinary Studies	1522	214
Basic Skills	13	--
Personal Awareness	2	--
Homeland Security, Law Enforcement	119	125
Public Administration	1	--
Construction	36	6
Mechanic and Repair	234	127
Precision Production	23	12
Transportation and Materials	26	135
Visual/Performing Arts	41	3
Health Professions	636	632
Business Management/Marketing	245	52

University of Illinois at Springfield	Enrollment	Degrees
Undeclared	353	--
Natural Resources	94	30
Communication/Journalism	192	80
Computer & Information Science	643	220
Education	176	76
Legal Professions	107	29
English Language	158	28
Liberal Arts/Sciences	211	56
Biological/Biomedical	225	35
Math & Statistics	148	14
Multi/Interdisciplinary Studies	18	0
Philosophy/Religious	28	4
Physical Sciences	53	9
Psychology	373	104
Homeland Security/Law Enforcement	191	52
Public Administration	437	170
Social Sciences	182	49
Visual/Performing Arts	47	9
Health Professions	126	63
Business Management/Marketing	1139	252
History	147	46

St. John's College of Nursing	Enrollment	Degrees
Health Professions	119	49

Source: Illinois Board of Higher Education, 2012 (Fall Enrollment)

The Greater Springfield Chamber of Commerce  
(217) 525-1173

Last Updated: 4/17/2014

Created & Designed By: Andrea Butler, Q5 Intern

E-mail: [pmarsh@gssc.org](mailto:pmarsh@gssc.org)

Website: [www.gssc.org](http://www.gssc.org)



# Springfield Workforce



## Enrollments & Graduates Cont. (2012)

## Highest Educational Attainment (2012)

<b>Robert Morris University</b>	<b>Enrollment</b>	<b>Degrees</b>
Information Technology	13	7
Computer Systems Networking	14	10
Culinary Arts/ Chef Training	0	0
Drafting and Design	4	10
Legal Assistant	14	12
Multi/Interdisciplinary Studies	17	9
Health and Physical Education	0	0
Commercial and Advertising Art	16	10
Interior Design	4	0
Graphic Design	17	17
Medical/Clinical Assistant	19	30
Pharmacy Technician/Assistant	0	0
Surgical Technology	0	0
Registered Nurse	0	0
Business Administration/Management	129	53
Accounting Technology	0	0
Management Information Systems	4	0

Source: Robert Morris University Information Department

	Springfield	United States
Less than 9 <sup>th</sup> grade	2.3%	5.8%
9 <sup>th</sup> -12 <sup>th</sup> , No Diploma	5.9%	7.9%
High School Graduate	29.1%	28.0%
Some college, No Degree	21.5%	21.3%
Associate's Degree	8.0%	8.0%
Bachelor's Degree	21.4%	18.2%
Graduate or Professional Degree	11.7%	10.9%
Percent of High School Graduates	91.8%	86.4%
Percent Bachelor's Degree or Higher	33.1%	29.1%

Source: US Census Bureau, ACS, 2012

The Greater Springfield Chamber of Commerce  
(217) 525-1173

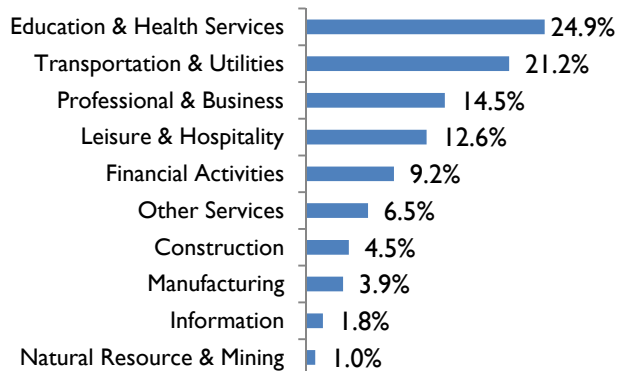
Last Updated: 4/17/2014

Created & Designed By: Andrea Butler, Q5 Intern

E-mail: [pmarsh@gsc.org](mailto:pmarsh@gsc.org)

Website: [www.gsc.org](http://www.gsc.org)

## Employment by Industry (2012)



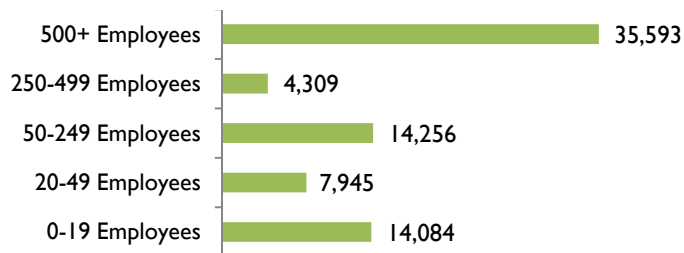
Source: Bureau of Labor Statistics, QCEW

## Leading Industries (2012)

NAICS	INDUSTRY	EMPLOYEES (000)
GVSL	State & Local Government	28.5
7225	Restaurants & Other Eating Places	7.2
6221	General Medical & Surgical Hospitals	7.2
6211	Offices of Physicians	4.4
5613	Employment Services	3.6
5241	Insurance Carriers	2.8
5221	Depository Credit Intermediation	2.5
GVF	Federal Government	1.9
4529	Other General Merchandise Stores	1.8
8139	Business, Professional, Labor, Political	1.5
FR	Farms	1.5
4451	Grocery Stores	1.4
5617	Services to Buildings & Dwellings	1.2
5412	Accounting, Tax Prep, Bookkeeping & Payroll	1.2
7211	Traveler Accommodation	1.1

Source: BLS, Moody's Analytics, 2012

## Private Employment by Firm Size (2012)



Source: U.S. Census Bureau - QWI

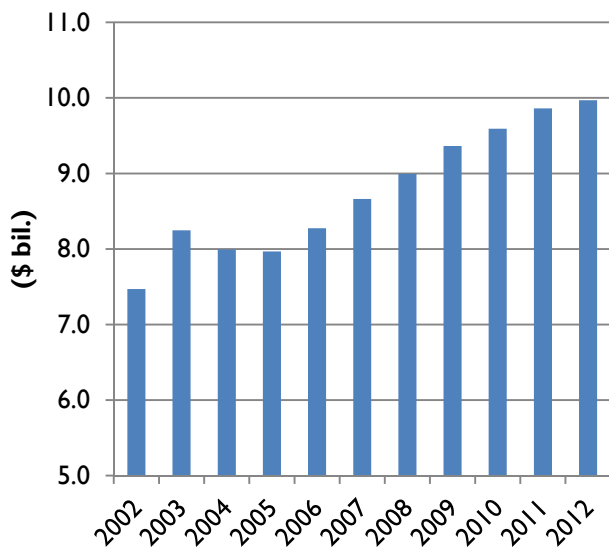
## Springfield Top Employers

Company	Employment
State of Illinois	17,500
Memorial Health System	5,854
St. John's Hospital	3,096
Springfield Public Schools	2,095
Springfield Clinic	2,039
Southern Illinois University School of Medicine	1,511
City of Springfield	1,467
Blue Cross/Blue Shield	1,316
Horace Mann	1,063
University of Illinois-Springfield	926
Lincoln Land Community College	860
Wells Fargo Home Mortgage	800
Sangamon County	773
AT&T	698
Illinois Army National Guard	685
The Hope Institute for Children and Families	680
H.D. Smith	375
Express Employment Professionals	363
Illinois Air National Guard	269
Levi, Ray & Shoup	262

Source: The Greater Springfield Chamber of Commerce



## Springfield, IL MSA – GDP (2012)



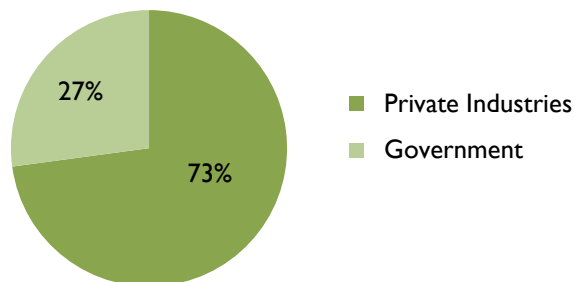
Source: U.S. Bureau of Economic Analysis

## GDP by Industry (2012)

GDP by Industry	(\$ mil)
Natural resources and Mining	(D)
Trade	1,171
Transportation and Utilities	236
Financial Activities	1,514
Professional and Business Services	805
Education and Health Services	1,654
Leisure and Hospitality	337
Information, Communication, and Technology (ICT)	(NA)
Private Goods-Producing Industries	943
Private Services-Providing Industries	6,324

\*D=Not Disclosed, NA=Not Available  
Source: U.S. Bureau of Economic Analysis

## Springfield, IL MSA – GDP by Sector (2012)



Source: U.S. Bureau of Economic Analysis

## Commercial Real Estate Q1 (2014)

### Office Use Inventory

Existing Buildings	374
Existing SF	7,532,065
Available SF	1,125,195
Vacancy Rate	10.10%
Average Rent per SF	\$12.50

### Industrial Use Inventory

Existing Buildings	140
Existing SF	3,487,584
Available SF	1,372,459
Vacancy Rate	34.80%
Average Rent per SF	\$3.86

Source: CoStar Realty Information

## Tax Structure

<b>Business Income Tax</b>	
-Corporations	7% of net income
-Trusts & Estates	5% of net income
<b>Individual Income Tax</b>	5% of net income
<b>Sales Tax</b>	
-State	5%
-City	1%
-County	0.25%
-City Home rule	2.25%
<b>Total</b>	8.50%
<b>Hotel Tax</b>	6%
<b>Motor Fuel Tax</b>	\$0.19 per gallon
<b>Vehicle Use</b>	1%
<b>Telecommunication Tax</b>	4%
<b>Use Tax</b>	
-General Merchandise	6.250%
-Food, Drugs, & Medical	1.000%
<b>Gaming Tax</b>	5% of proceeds

Source: Illinois Department of Revenue

## CWLP Business Electric Rates

### Small

Available to any customer for single-phase nonresidential, institutional and commercial service or three-phase residential, nonresidential, institutional or commercial service taken through a single meter at the utility standard secondary voltage. The minimum demand shall be one kW.

Monthly customer charge	\$9.55
Winter Energy Charge	\$0.0969/kWh
Summer Energy Charge	\$0.1055/kWh
Winter Demand Charge	\$8.16/kW
Summer Demand Charge	\$9.87/kW

### Medium

Available to any customer taking nonresidential, institutional, or commercial service through a single meter at the utility standard voltage. The minimum demand shall be 70 kW.

Monthly customer charge	\$130.23
Winter Energy Charge	\$0.0861/kWh
Summer Energy Charge	\$0.0945/kWh
Winter Demand Charge	\$11.01/kW
Summer Demand Charge	\$12.97/kW

### Large

Available to any industrial customer taking service through a single primary meter at 4,160 volts or 12,470 volts and assuming a minimum demand responsibility of 2,500 kilovolt-amperes (kVa). The minimum bill shall be \$8,000 per month.

Monthly customer charge	\$589.67
Winter Energy Charge	\$0.0736/kWh
Summer Energy Charge	\$0.0797/kWh
Winter Demand Charge	\$11.69/kW
Summer Demand Charge	\$14.92/kW

Source: City Water, Light, & Power

The Greater Springfield Chamber of Commerce  
(217) 525-1173

Last Updated: 4/17/2014

Created & Designed By: Andrea Butler, Q5 Intern

E-mail: [pmarsh@gsc.org](mailto:pmarsh@gsc.org)

Website: [www.gsc.org](http://www.gsc.org)



# Springfield Cost of Business & Taxes



## Ameren Business Natural Gas Rates

**GDS-2 Small General Gas Delivery Service:** Non-residential customers whose highest Average Daily Usage is less than 200 therms.

<b>Customer Charge</b>	
\$39.77	Annual gas usage of 600 Therms or less
\$69.17	Annual gas usage of over 600 Therms
<b>Distribution Delivery Charge</b>	
\$0.07	Per Therm under Rider S
\$0.04	Per Therm under Rider T
<b>Uncollectable Expense Charge</b>	
\$0.33	

**GDS-3 General Gas Delivery Service:** Non-residential customers whose highest Average Daily Usage is greater than 200 therms but less than 1,000 therms.

<b>Customer Charge</b>	
\$190.00	
<b>Distribution Delivery Charge</b>	
\$0.12749	per Therm under Rider S
\$0.09776	Per Therm under Rider T
<b>Uncollectable Expense Charge</b>	
\$0.23	

\*Rider S – System Gas Service

\*Rider T – Transportation Gas Service

Source: Ameren Illinois

## Ameren Business Electric Rates

**DS-2 Small General Delivery Service:** Non-residential customer with an electric demand of less than 150 kW.

<b>Customer Charge (per electric service account)</b>	
Secondary Meter Voltage (up to and including 600 volts)	\$12.53
All other electric service accounts	\$246.27
<b>Meter Charge (per electric service account)</b>	
Secondary Meter Voltage (up to and including 600 volts)	\$6.04
All other electric service accounts	\$8.22
<b>Distribution Delivery Charge (per kWh)</b>	
Summer	\$0.02620
Non-Summer (First 2,000 kWh)	\$0.01434
Non-Summer (Over 2,000 kWh)	\$0.00632
<b>Uncollectable Recovered in Base Rates (per monthly bill)</b>	\$0.20
<b>EDT Cost Recovery (per kWh)</b>	\$0.0017660

## Ameren Business Electric Rates Continued

**DS-3 General Delivery Service:** Non-residential customer with an electric demand of equal to or greater than 150 kW but less than 1,000 kW.

<b>Customer Charge (per electric service account)</b>	
Secondary Meter Voltage (up to and including 600 volts)	\$168.39
Primary Meter Voltage (above 600 volts up to and including 15kV)	\$719.94
High Voltage Meter Voltage (above 15kV up to 100kV)	\$1,479.15
+100kV Meter Voltage (above 100kV)	\$3,047.91
<b>Meter Charge (per electric service account)</b>	
Secondary Meter Voltage (up to and including 600 volts)	\$26.34
Primary Meter Voltage (above 600 volts up to and including 15kV)	\$27.23
High Voltage Meter Voltage (above 15kV up to 100kV)	\$64.41
+100kV Meter Voltage (above 100kV)	\$64.41
<b>Distribution Delivery Charge (per kWh)</b>	
Primary Supply Voltage	\$3.749
High Supply Voltage	\$0.387
+100kV Supply Voltage	\$0.044
<b>Transformation Charge</b>	\$0.590
<b>Metering Reassignment Charge</b>	NA
<b>Rate Limiter (per kWh)</b>	\$0.01514
<b>Uncollectable Recovered in Base Rates (per monthly bill)</b>	\$0.59
<b>EDT Cost Recovery (per kWh)</b>	\$0.0017660

**DS-4 Large General Delivery Service:** Non-residential customer with an electric demand of equal to or greater than 1,000 kW.

<b>Customer Charge (per electric service account)</b>	
Secondary Meter Voltage (up to and including 600 volts)	\$168.39
Primary Meter Voltage (above 600 volts up to and including 15kV)	\$719.94
High Voltage Meter Voltage (above 15kV up to 100kV)	\$1,479.15
+100kV Meter Voltage (above 100kV)	\$3,047.91
<b>Meter Charge (per electric service account)</b>	
Secondary Meter Voltage (up to and including 600 volts)	\$33.51
Primary Meter Voltage (above 600 volts up to and including 15kV)	\$34.41
High Voltage Meter Voltage (above 15kV up to 100kV)	\$71.59
+100kV Meter Voltage (above 100kV)	\$71.59
<b>Distribution Delivery Charge (per kWh)</b>	
Primary Supply Voltage	\$2.529
High Supply Voltage	\$0.498
+100kV Supply Voltage	\$0.029
<b>Transformation Charge</b>	\$0.590
<b>Metering Reassignment Charge</b>	NA
<b>Reactive Demand Charge (per kVAR)</b>	
Per kVAR	\$0.270
<b>Rate Limiter (per kWh)</b>	\$0.01514
<b>Uncollectable Recovered in Base Rates (per monthly bill)</b>	--
<b>EDT Cost Recovery (per kWh)</b>	
Primary Supply Voltage	\$0.0003627
High Supply Voltage	\$0.0002126
+100kV Supply Voltage	\$0.0001076

Source: Ameren Illinois

The Greater Springfield Chamber of Commerce  
(217) 525-1173

Last Updated: 4/17/2014

Created & Designed By: Andrea Butler, Q5 Intern

E-mail: [pmarsh@gssc.org](mailto:pmarsh@gssc.org)

Website: [www.gssc.org](http://www.gssc.org)



# Springfield Cost of Business & Taxes



## Occupational Employment & Wages

	Total Employment	Location Quotient	Hourly Wages		
			Entry	Median	Experienced
Total all occupations	107,880	1.0	\$9.51	\$16.16	\$26.70
Management	5,240	.99	\$22.17	\$38.34	\$52.74
Business/Financial Operations	5,520	1.04	\$17.37	\$27.75	\$35.04
Computer & Mathematical	2,850	.96	\$23.01	\$38.37	\$44.73
Architecture/Engineering	1,080	.56	\$22.04	\$33.75	\$40.15
Life, Physical & Social Science	470	.52	\$18.03	\$31.50	\$35.05
Community & Social Services	2,800	1.8	\$14.20	\$27.33	\$31.71
Legal	580	.68	\$20.55	\$31.72	\$49.19
Arts, Design, Entertainment, Sports, & Media	860	.59	\$11.16	\$19.39	\$27.85
Healthcare Practitioners & Technical	8,880	1.4	\$16.31	\$26.44	\$45.66
Healthcare Support	3,580	1.1	\$10.05	\$11.79	\$15.15
Protective Service	1,660	.62	\$10.64	\$23.34	\$32.48
Food Preparation & Serving-Related	9,190	.96	\$8.74	\$9.15	\$10.89
Building, Grounds Cleaning & Maintenance	2,980	.85	\$8.83	\$11.11	\$15.32
Sales and Related	10,820	.94	\$8.83	\$10.25	\$17.26
Office & Administrative Support	24,290	1.37	\$10.38	\$15.48	\$21.44
Farming, Fishing, & Forestry	100	.29	\$10.83	\$15.58	\$18.13
Construction and Extraction	4,000	.97	\$13.14	\$21.85	\$27.85
Installation, Maintenance & Repair	3,450	.82	\$12.08	\$20.54	\$26.60
Production Occupations	3,730	.52	\$10.29	\$14.98	\$20.52
Transportation/Material Moving	5,500	.76	\$8.73	\$11.04	\$15.73

Source: BLS & IDES-OES

The Greater Springfield Chamber of Commerce  
(217) 525-1173

Last Updated: 4/17/2014

Created & Designed By: Andrea Butler, Q5 Intern

E-mail: [pmarsh@gsc.org](mailto:pmarsh@gsc.org)

Website: [www.gsc.org](http://www.gsc.org)